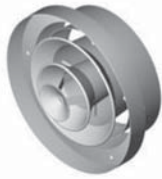




## Hi-Flo Jet Diffusers

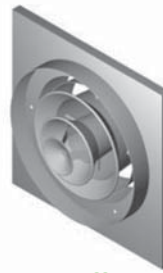
RWH / RWH-P



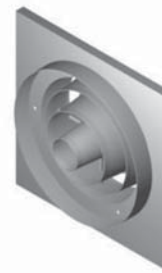
RWH-P Diffuser Setting



RWH-P Jet Setting



RWH Diffuser Setting



RWH Jet Setting

SWL Spectrum Correction Data By Octaves						
Frequency (Hz)	125	250	500	1K	2K	4K
Diffuser / 0 °	-1	+1	+3	+8	+7	0
Diffuser / 15 °	0	+2	+4	+8	+7	+2
Jet/ 0°	-3	-1	+3	+8	+6	+5
Jet/ 15°	+1	+3	+4	+7	+6	+1

Terminal Velocity Correction Factors						
Vt (m/s)	0.2	0.3	0.4	0.5	1.0	1.5
Factor	2.5	1.7	1.25	1.0	0.5	0.3

Multiple Unit Correction Factors				
No. of units	1	2	3	4
dBA addition	0	+3	+5	+6
Throw factor	1.0	1.37	1.86	2.06

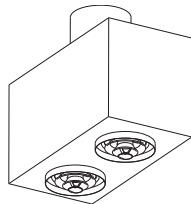
15° Core Setting Correction Factors		
	Jet	Diffuser
dBA addition	+11dB	+4dB
Pressure Loss Factor	1.25	1.25

Heating Differential			
Size	5°C	10°C	20°C
RWH-200	0.95	0.90	0.65
RWH-250	0.90	0.85	0.60
RWH-315	0.80	0.75	0.55
RWH-380	0.70	0.65	0.45

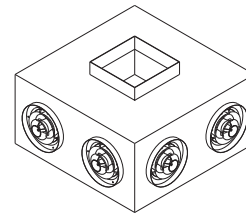
To estimate vertical projection under cooling conditions multiply throw (to relevant terminal velocity) by factors as follows  
 10°C cooling x 1.15  
 5°C cooling x 1.10

The above data is based on isothermal supply air conditions. To estimate maximum vertical projection under warming conditions multiply "jet" throw data above by the relevant factor.

### Plenums



Full details of standard plenums are available from Head Office. Typical standard plenum arrangement with optional circular or rectangular connections

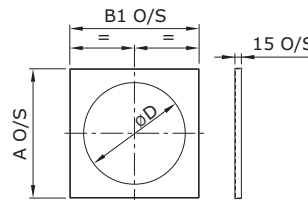


Special designs are available to suit non-standard applications, for example, rooftop air handling units and high level ducting

### Mounting Plates

#### 1- Element

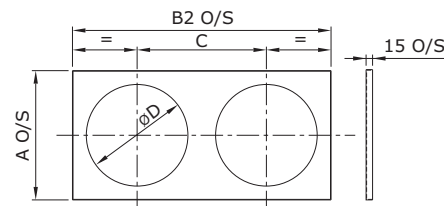
Size	A	B1	Ø D
Ø 200	299	299	Ø 235
Ø 250	349	349	Ø 285
Ø 315	399	399	Ø 350
Ø 380	449	449	Ø 415



1 Element

#### 2- Element

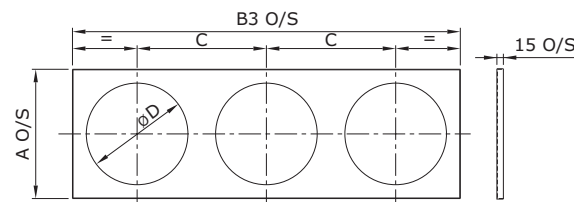
Size	A	B2	C	Ø D
Ø 200	299	598	299	Ø 235
Ø 250	349	698	349	Ø 285
Ø 315	399	798	399	Ø 350
Ø 380	449	898	499	Ø 415



2 Elements

#### 3- Element

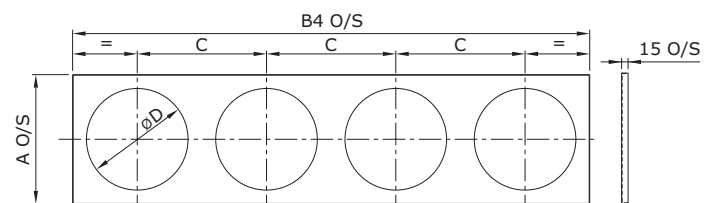
Size	A	B3	C	Ø D
Ø 200	299	897	299	Ø 235
Ø 250	349	1047	349	Ø 285
Ø 315	399	1197	399	Ø 350
Ø 380	449	1347	499	Ø 415



3 Elements

#### 4- Element

Size	A	B4	C	Ø D
Ø 200	299	1196	299	Ø 235
Ø 250	349	1396	349	Ø 285
Ø 315	399	1596	399	Ø 350
Ø 380	449	1796	499	Ø 415



4 Elements