

## Documentation brochures



DOWNLOADS

## Product Sheet

1.1 Air Technology\_\_\_\_\_Page 2

1.2 Application / Types\_\_\_\_\_Page 2

1.3 Properties\_\_\_\_\_Page 2

1.4 Mounting Methods\_\_\_\_\_Page 2

1.5 Finishes\_\_\_\_\_Page 2

## Technical Drawings

2.1 Schematic Drawings\_\_\_\_\_Page 3

# 1. Productblad

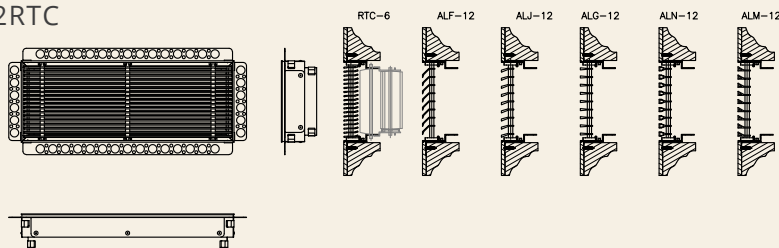
The stucco grille is a wall or ceiling grille fitted with an angle profile. This angle profile makes it possible to create a straight, sharp edge. This edge is coated with plaster, allowing the grille to sit neatly within the wall opening for a clean, refined finish. Waterloo stucco grilles with fixed blades are suitable for wall applications. They offer extensive possibilities to meet a wide range of air-technical and architectural requirements. The range is comparable to the wide variety of special options and customisations available.

## Application:

Selection data can be found in the product documentation.

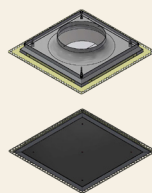
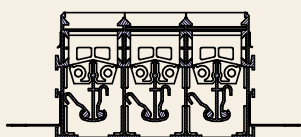
## Wall grilles:

ALN  
ALM  
ALF  
ALG  
ALJ  
RTC  
2RTC



## Ceiling grilles:

- WPD
- CS



## Properties

- 2 mm edge after finishing
- Adjustable wall thickness

## Mounting methods

- Screw mounting
- Plaster finishing

## Finish

Standard finish: anodized aluminum  
RAL color available on request

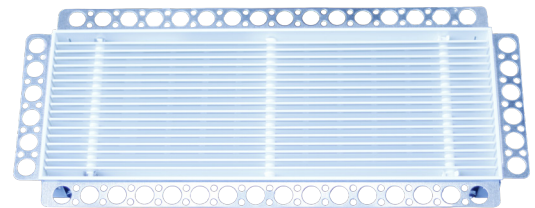


Image 1, stucco grille

## Air Technology

Waterloo stucco grilles are designed for optimal air supply and extraction in spaces where a clean, seamless finish is essential. They integrate fully into plastered walls or ceilings, ensuring that air-technical performance does not compromise the architectural design. Air supply through stucco grilles contributes to a healthy and comfortable indoor climate. Depending on the situation, air distribution can occur via the wall or ceiling. The grille ensures that air is delivered into the space without any visually disruptive elements.

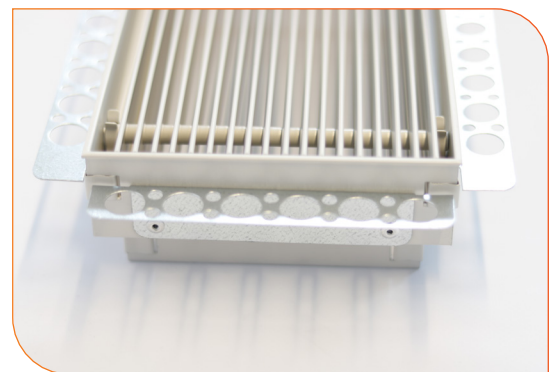
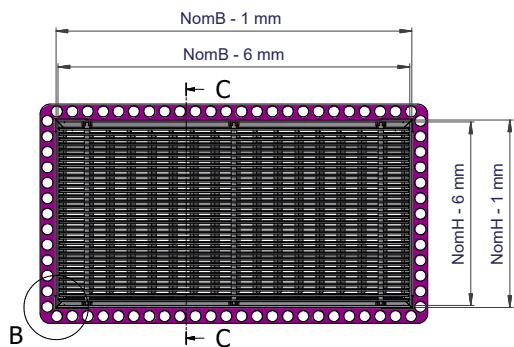


Image 2, Detailpicture stuccooster

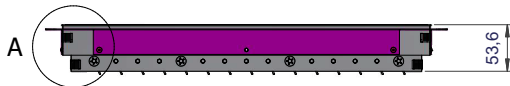


Image 3, Projectsituation stucco grille

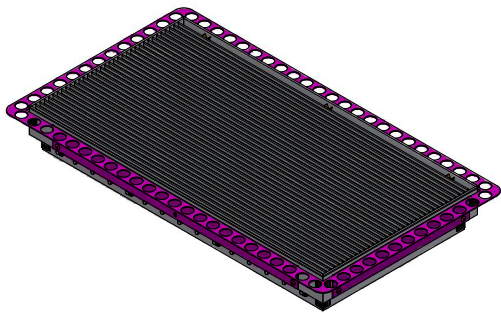
## 2. Technical drawings



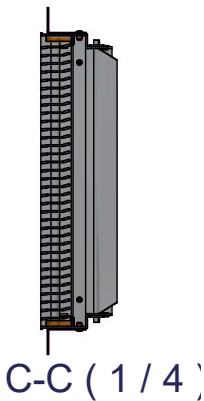
Drawing 1, Technical drawing – front view



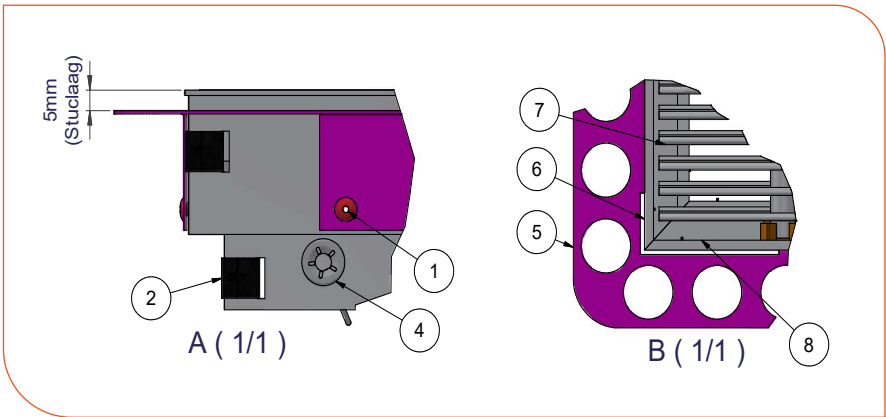
Drawing 2, Technical drawing – bottom view



Drawing 3, 3D drawing



Drawing 4, Technical drawing – side view



Drawing 5, Schematic drawing – stucco edge

- Components**
- 1. Pop rivet
  - 2. Angle spring
  - 3. Clamp spring
  - 4. Starlock
  - 5. Stucco edge
  - 6. Edge
  - 7. Internal structure
  - 8. Edge
  - 9. Blade



**OC Waterloo Holten**  
Ondernemersweg 2  
7451PK Holten (NL)  
[orangeclimate.com](http://orangeclimate.com)